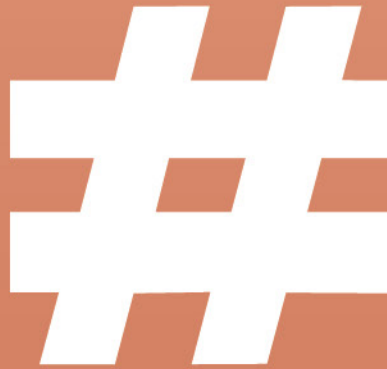


# JOINTS

The word "JOINTS" is written in large, bold, orange letters. Behind the letters are several silver-colored copper pipe fittings, including elbows, tees, and straight connectors, arranged to appear as if they are part of the text.

**#MCJ**  
MY COPPER JOINTS

THAT YOU CAN TRUST



## METALLURGICAL MARVEL OF INDIA

### **DID YOU KNOW WHY COPPER WAS SO VERSATILELY UTILISED?**

The Metal's Qualities - Durability And Malleability -  
Made It Not Just A Commodity, But A Symbol Of  
Progress And Craftsmanship

# THE TIMELESS WONDER OF COPPER IN INDIA



Since the Chalcolithic period around 3000 BCE, copper has been crucial to India's history. Early civilizations like the Indus Valley Civilization used it for tools, weapons, jewelry, and household items, showcasing advanced metalworking skills. Excavations at Harappa and Mohenjo-Daro have unearthed numerous copper artifacts, highlighting its daily significance.

Copper symbolized progress and innovation in ancient India. Indian artisans developed techniques like lost-wax casting to create intricate, functional, and beautiful designs, marking significant advancements in technology and craftsmanship. Copper became a cornerstone of Indian culture.



# METALLURGICAL MASTERY IN ANCIENT INDIA

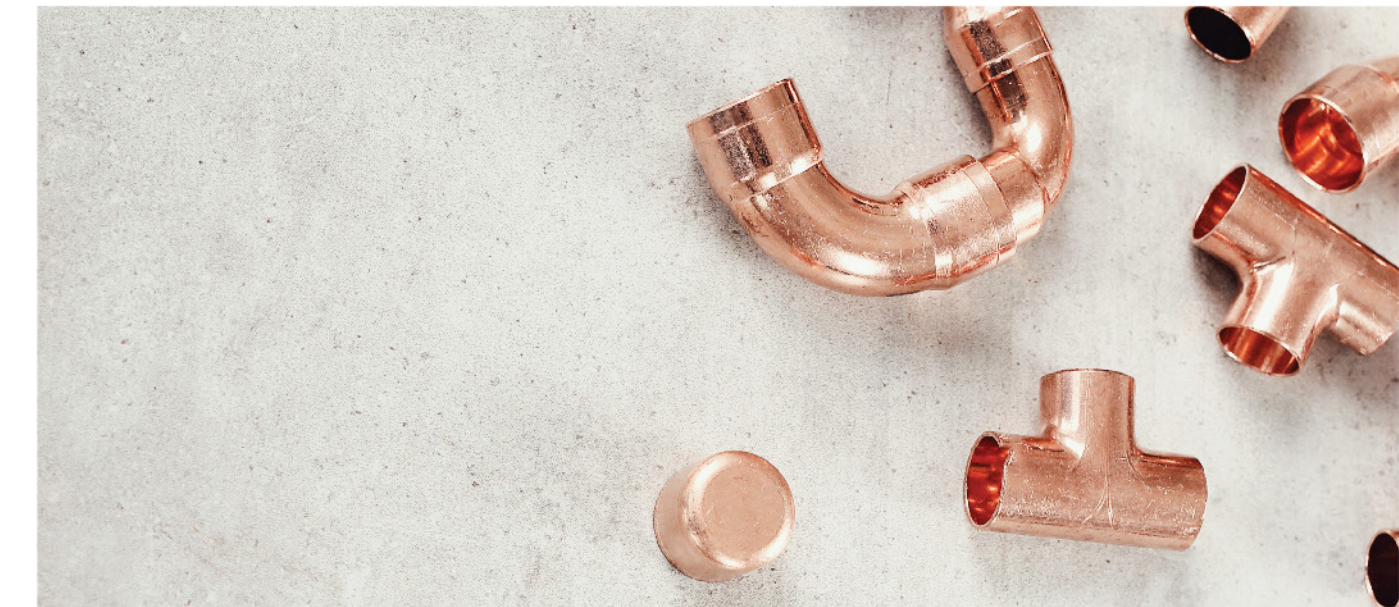


India boasts a rich history of metallurgy. The Rigveda, one of the oldest texts, mentions various metals, revealing early metallurgical knowledge. By the 1st millennium BCE, India had mastered methods for working with metals like copper, iron, and gold.



Indian metallurgists were renowned for producing high-quality steel and iron. The Iron Pillar of Delhi, from the 4th century CE, stands as a marvel of ancient engineering. India's tradition of using metals in sculpture, architecture, and tools laid the foundation for many global innovations.



A collection of various copper pipe fittings, including elbows, tees, and a cap, scattered on a light-colored, textured concrete surface. The fittings are polished and show some signs of use.

At #MCJ, we pay homage to copper's legacy by meticulously crafting joints and fittings that embody its timeless qualities. Each piece is a fusion of artistry and engineering, designed to seamlessly connect and endure, just like copper itself.

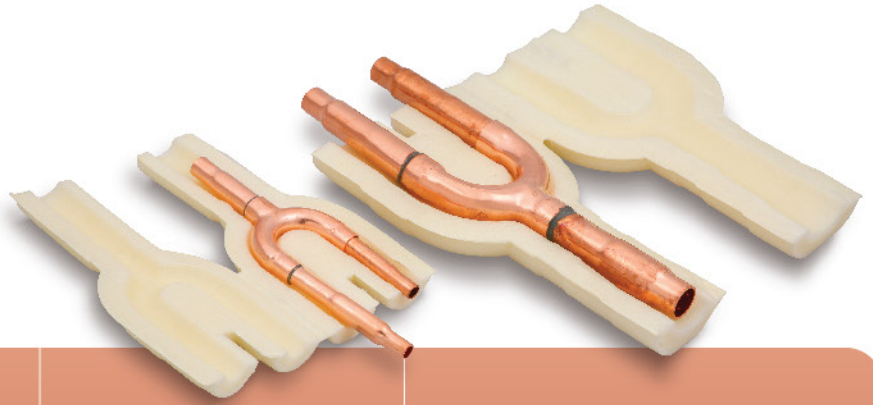
## UNIQUE FEATURES THAT WILL ELEVATE YOUR EXPERIENCE

**JISH 3300H Copper | Pressure Tested 5.2 MPA**  
**2% silver Brazing Rods | XLPE & Nitrile insulation**



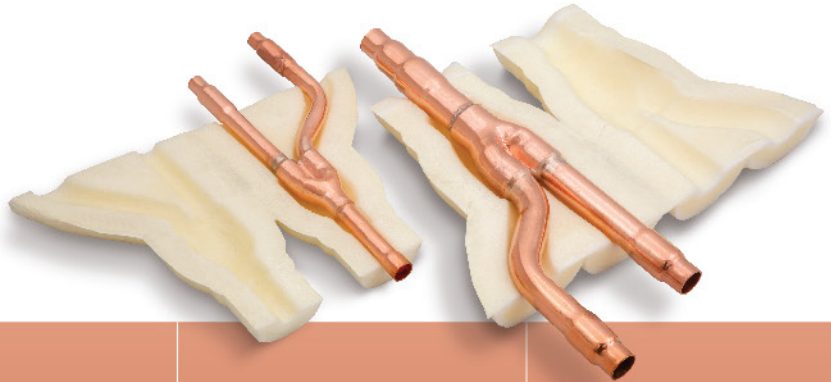


## MI SERIES



Model No	PiPe-A	PiPe-B	PiPe-C
PI-FQZHIN-01 (Gas Side)	19.05 (3/4) - 15.88 (5/8)	19.05 (3/4) - 15.88 (5/8) -12.7 (1/2)	19.05 (3/4) - 15.88 (5/8) -12.7 (1/2)
PI-FQZHN-01 (Liquid Side)	12.7 (1/2) - 9.52 (3/8)	12.7 (1/2) - 9.52 (3/8) -6.35 (1/4)	12.7 (1/2) - 9.52 (3/8) - 6.35 (1/4)
PI-FQZHN-02 (Gas Side)	25.4 (1) - 22.2 (7/8)	22.2 (7/8) - 19.05 (3/4) -15.88 (5/8)	22.2 (7/8) - 19.05 (3/4) - 15.88 (5/8) - 12.7 (1/2)
PI-FQZHN-02 (Liquid Side)	9.52 (3/8) - 12.7 (1/2)	12.7 (1/2) - 9.52 (3/8) - 6.35 (1/4)	12.7 (1/2) - 9.52 (3/8) - 6.35 (1/4)
PI-FQZHN-03 (Gas Side)	31.75 (1 1/4) - 28.58 (49/81)	28.58 (11/8) - 22.2 (7/8) -19.05 (3/4)	28.58 (11/8) - 22.2 (7/8) -19.05 (3/4) - 15.88 (5/8)
PI-FQZHN-03 (Liquid Side)	19.05 (3/4) - 15.88 (5/8)	15.88 (5/8) - 12.7 (1/2) - 9.52 (3/8)	15.88 (5/8) - 12.7 (1/2) - 9.52 (3/8) - 6.35 (1/4)
PI-FQZHN-04 (Gas Side)	38.10 (1 1/2) - 34.93 (13/8)	34.93 (13/8) - 28.58 (11/8) - 22.2 (7/8)	34.93 (13/8) - 28.58 (11/8) - 22.2 (7/8) - 19.05 (3/4)
PI-FQZHN-04 (Liquid Side)	22.2 (7/8) - 19.05 (3/4)	19.05 (3/4) - 15.88 (5/8) - 12.7 (1/2)	19.05 (3/4) - 15.88 (5/8) - 12.7 (1/2) - 9.52 (3/8)

## DA SERIES



Model No		PiPe-A	PiPe-B	PiPe-C
My-KHRP-22T	Gas Side	12.7 (1/2) - 15.88 (5/8) -19.05 (3/4)		
My-KHRP-22T	Liquid side	9.52 (3/8)		
My-KHRP-33T	Gas Side	22.22 (7/8) - 19.05 (3/4)		
My-KHRP-33T	Liquid side	9.52 (3/8)		
My-KHRP-72T	Gas Side	31.75 (1 1/4) - 28.58 (11/8) = 25.4 (1)	25.4 (1) - 19.05 (3/4) - 15.88 (5/8)	19.05 (3/4) - 15.88 (5/8) - 12.7 (1/2)
My-KHRP-72T	Liquid side	15.81 (5/8) - 12.7 (1/2)	12.7 (1/2) - 9.52 (3/8)	12.7 (1/2) - 9.52 (3/8) - 6.35 (1/4)
My-KHRP-73T	Gas Side	38.10 (1 1/2) - 31.75 (1 1/4)	31.75 (1 1/4) - 28.58 (11/8) - 25.4 (1)	25.4 (1) - 19.05 (3/4) - 15.88 (5/8)
My-KHRP-73T	Liquid side	15.88 (5/8) - 19.05 (3/4)	19.05 (3/4) - 15.88 (5/8) - 12.7 (1/2)	15.88 (5/8) - 12.7 (1/2) - 9.52 (3/8)

## TA SERIES



Model No	PiPe-A	PiPe-B	PiPe-C	Reducer Sets
Pi-RBM-55E (Gas Side)	15.88 (5/8)	15.88 (5/8)	15.88 (5/8)	2, 3×2, 15×2
Pi-RBM-55E (Liquid Side)	9.52 (3/8)	9.52 (3/8)	9.52 (3/8)	1×2
Pi-RBM-105E (Gas Side)	22.22 (7/8)	22.22 (7/8)	22.22 (7/8)	15, 4×2, 5×2
Pi-RBM-105E (Liquid Side)	15.88 (5/8)	15.88 (5/8)	15.88 (5/8)	2, 15, 16
Pi-RBM-205E (Gas Side)	21.75 (11/4)	28.58 (11/8)	28.58 (11/8)	6, 7×2, 8, 9, 10, 15
Pi-RBM-205E (Liquid Side)	15.88 (5/8)	15.88 (5/8)	15.88 (5/8)	2, 3×2, 16
Pi-RBM-305E (Gas Side)	81.10 (11/2)	81.10 (11/2)	81.10 (11/2)	7, 11, 12×2, 13×3, 14×2, 15
Pi-RBM-305E (Liquid Side)	22.22 (7/8)	22.22 (7/8)	22.22 (7/8)	15, 16, 17×2

All joints will come with the required Reducer Sets (TP sets)

### Reducer No and Size

1	OD 9.52 (3/8) - 6.35 (1/4)	7	OD 28.58 (11/8) × 22.2 (7/8)	13	OD 38.1 (11/2) × 34.93 (13/8)
2	OD 15.88 (5/8) × 12.7(1/2)	8	OD 28.58 (11/8) × 34.93 (13/8)	14	OD 38.1 (11/2) × 41.28 (15/8)
3	OD 15.88 (5/8) × 19.05 (3/4)	9	OD 31.75 (11/4) × 28.58 (11/8)	15	OD 15.88 (5/8) × 12.7 (1/2) × 9.52 (3/8)
4	OD 22.22 (7/8) × 15.88 (5/8)	10	OD 31.75 (11/4) × 34.93 (13/8)	16	OD 15.88 (5/8) × 12.7 (1/2) × 9.52 (3/8) × 6.35 (1/4)
5	OD 22.22 (7/8) × 28.58 (11/8)	11	OD 38.1 (11/2) × 15.88 (5/8)	17	OD 22.2 (7/8) × 19.05 (3/4) × 15.88 (5/8)
6	OD 28.58 (11/8) × 15.88 (5/8)	12	OD 38.1 (11/2) × 28.58 (11/8)		

## ME SERIES



Model No	Pipe-A	Pipe-B	Pipe-B	Reducer Sets
PI-102SS-G2 (Gas Side)	15.88 (5/8)	19.05 (3/4)	19.05 (3/4)	6, 7, 8×2
PI-102SS-G2 (Liquid Side)	9.52 (3/8)	9.52 (3/8)	9.52 (3/8)	1×2
PI-102LS-G2 (Gas Side)	19.05 (3/4)	25.4 (1)	25.4 (1)	7 8 9 12 13×2 14×2
PI-102LS-G2 (Liquid Side)	9.52 (3/8)	12.7 (1/2)	12.7 (1/2)	1, 3×2
PI-202S-G2 (Gas Side)	19.05 (3/4)	25.4 (1)	25.4 (1)	7, 8, 9, 10, 15×3
PI-202S-G2 (Liquid Side)	12.7 (1/2)	15.88 (5/8)	15.88 (5/8)	2, 3, 5, 6
PI-302S-G2 (Gas Side)	25.4 (1)	31.75 (1 1/4)	31.75 (1 1/4)	11, 12, 13, 14, 15, 16, 17×2, 18×2
PI-302S-G2 (Liquid Side)	15.88 (5/8)	19.05 (3/4)	19.05 (3/4)	4 5 6 7 8

All joints will come with the required Reducer Sets (TP sets)

### Reducer No and Size

1	OD 9.52 (3/8) - 6.35 (1/4)	8	OD 19.05 (3/4) × 15.88 (5/8)	15	OD 25.4 (1) × 28.58 (1 1/8)
2	OD 12.7 (1/2) × 6.35 (1/4)	9	OD 19.05(3/4) × 22.2 (7/8)	16	OD 31.75 (1 1/4) × 28.58 (1 1/8)
3	OD 12.7 (1/2) × 9.52 (3/8)	10	OD 19.05 (3/4) × 25.4 (1)	17	OD 31.75 (1 1/4) × 34.93 (1 3/8)
4	OD 15.88 (5/8) × 6.35 (1/4)	11	OD 9.52 (3/8) - 6.35 (1/4)	18	OD 31.75 (1 1/4) × 34.93 (1 3/8) × 41.28 (1 5/8)
5	OD 15.88 (5/8) × 9.52 (3/8)	12	OD 25.4 (1) × 12.07 (1/2)	19	9.52 (3/4) × 12.7 (1/4)
6	OD 15.88 (5/8) × 12.7 (1/2)	13	OD 25.4 (1) × 19.05 (3/4)		
7	OD 19.05 (3/4) × 12.7 (1/2)	14	OD 25.4 (1) × 22.2 (7/8)		



**MY HVAC PVT LTD**

A-301, Sobo Center, Gala Gymkhana Road,  
South Bopal, Ahmedabad - 380058, Gujarat, India

**Mo: +91 99252 28926 | +91 90810 09595**

**Email: [sales@myhvac.co.in](mailto:sales@myhvac.co.in)**